

# HP Easy Shell



## Table of contents

Summary.....	2
Prerequisites .....	2
Basic setup.....	2
Client configuration .....	2
Administrator Settings .....	3
Applications .....	5
Connections.....	6
Websites.....	6
Deployment.....	6

## Summary

HP Easy Shell is a Windows-based application that allows HP Thin Client customers to control, customize, and protect their Windows Embedded user experience with intuitive and easy-to-deploy settings. HP Easy Shell replaces the full Microsoft Windows Embedded “shell” in order to provide a more focused user experience without device domain connection requirements or complicated group admin policies.

HP Easy Shell is an excellent solution for customers that are looking to deploy their HP Thin Clients in a variety of ways, including:

- Kiosk or single-application use scenarios
- Virtual desktop end-points
- Cloud-based end-points

## Prerequisites

HP Easy Shell requires the following environment:

<b>HP Thin Client OS</b>	Windows Embedded Standard 7, Windows Embedded 8 Standard, Windows Embedded 8.1 Industry
<b>Additional software</b>	Microsoft .Net 4.0

## Basic setup

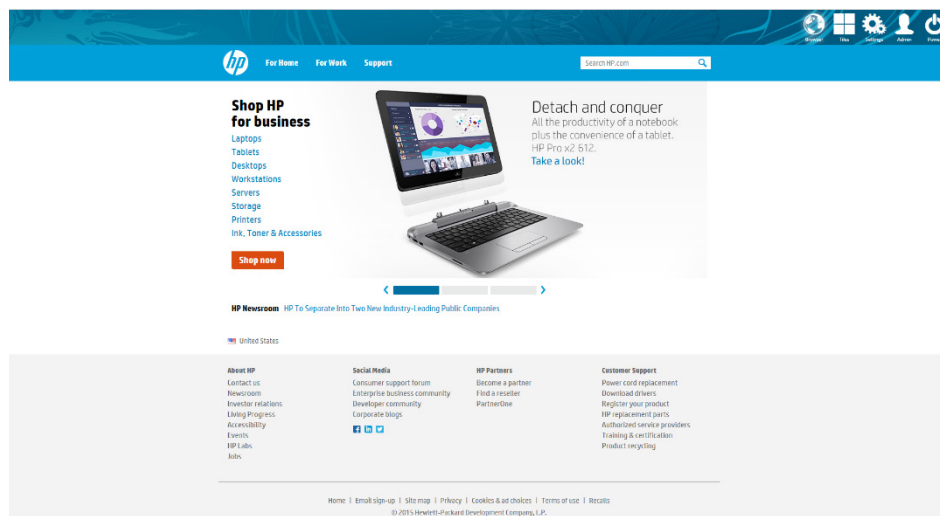
To install HP Easy Shell, the admin can perform the following steps:

- 1 Ensure prerequisites are met
- 2 Download HP Easy Shell from the HP Support Site
- 3 Copy the software installation setup to the HP Thin Client
- 4 Run the software setup program

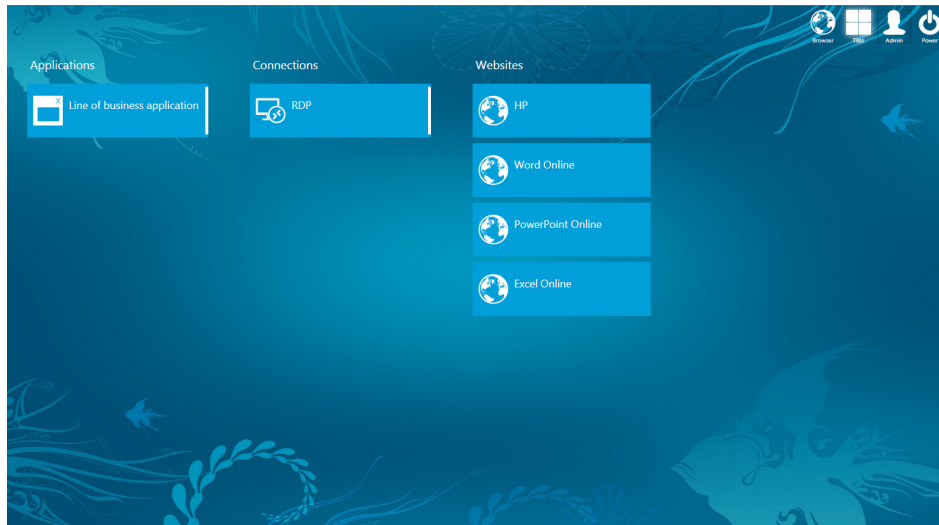
## Client configuration

It's easy to customize the user experience with HP Easy Shell. This section explains the different options available to the System Administrator.

**Figure 1.** HP Easy Shell – Browser-based kiosk



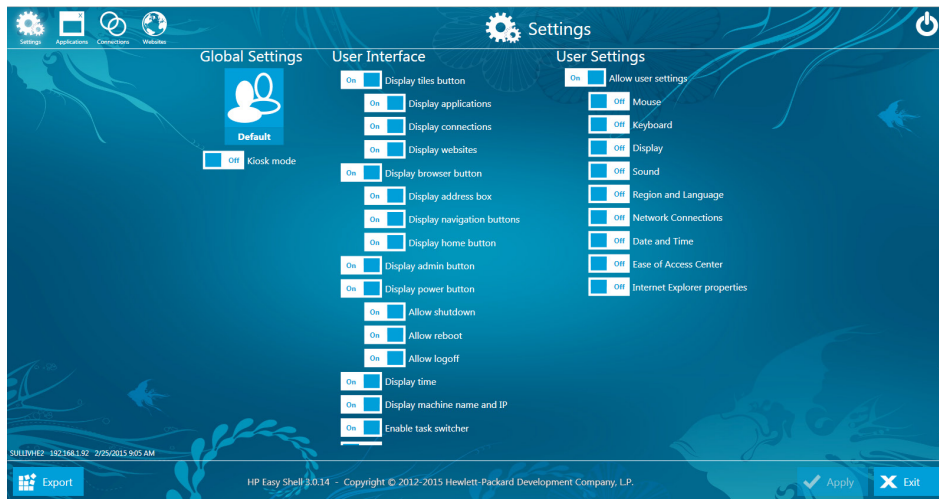
**Figure 2.** HP Easy Shell



## Administrator Settings

Administrators have plenty of flexibility when it comes to defining the end-user experience with HP Easy Shell. The Settings area allows administrators to easily specify the capabilities of the user.

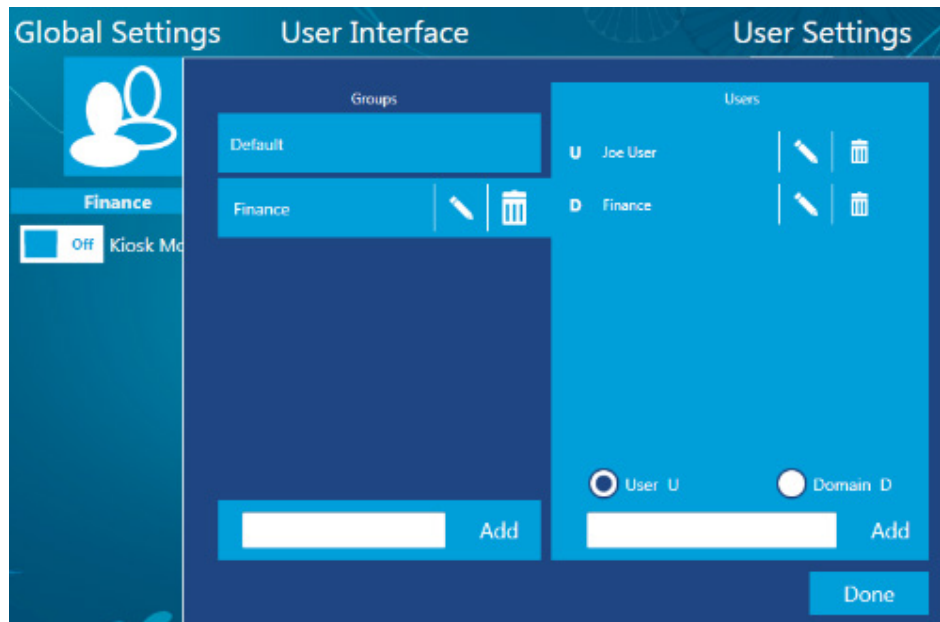
**Figure 3.** HP Easy Shell – Administrator Settings



## 1. Global Settings

HP Easy Shell can be configured to provide different experiences to different users or groups. The administrator can create a group of users or domain users. Once defined, the user's settings below are specific to each user or group.

**Figure 4.** HP Easy Shell – Global Settings; User Interface



## 2. User Interface

**Display Tiles Buttons:** Specifies user visibility to specific areas on HP Easy Shell

- **Display Applications** – Controls user visibility to Applications (as defined in the Applications area)
- **Display Connections** – Controls user visibility to RDP, Citrix®, and VMware connections
- **Display Websites** – Controls user visibility to Websites (as defined in the Websites area)

**Display Browser Buttons:** Controls user visibility to the Browser button

- **Display Address Box** – Allows the user access to the address bar
- **Display Navigation Buttons** – Allows the user to access the forward/back navigation buttons
- **Display Home Buttons** – Allows the user to access the Home button for the default website

**Display Admin Button:** Specifies user visibility to the Admin button located on the Launchpad. When selected, this allows the user to personally customize their HP Easy Shell experience after applying their administrator credentials.

**Display Power Button:** Controls user ability to manipulate power settings

- **Allow Shutdown**
- **Allow Reboot**
- **Allow Logoff**

**Display Time:** Displays the date/time on the Launchpad

**Display Machine Name and IP:** Displays the machine name and IP address on the Launchpad

**Enable Task Switcher:** Allows the user to switch tasks using the HP Easy Shell task switcher

**Hide HP Easy Shell during session:** Hides HP Easy Shell entirely when used in kiosk mode

**Enable Custom Background:** Allows the administrator to specify a custom background image

**Select Theme:** Allows the administrator to specify a different color theme for HP Easy Shell

### 3. User Settings

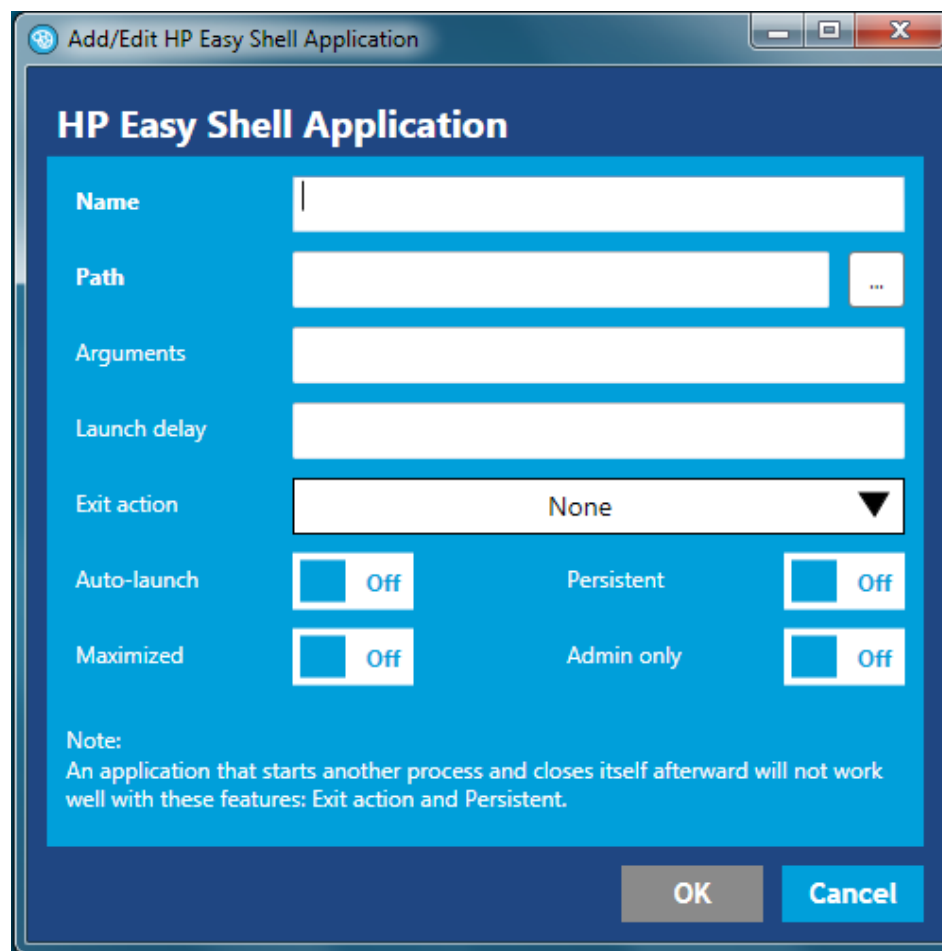
**Allow User Settings:** Administrators can define if the user has access to change various settings on the HP Thin Client, including modifying the following:

- Mouse
- Keyboard
- Display
- Sound
- Region and Language
- Network Connections
- Date and Time
- Ease of Access Center
- Internet Explorer Properties

### Applications

The administrator can specify whether or not a user has access to an application, as well as how the user interacts with the application. The application can be configured to appear as a tile on the Launchpad, whether it should automatically launch upon login, whether it should be maximized, be persistent, etc. In addition, the administrator can define exit actions, which determine what HP Easy Shell does when the applications is closed. Available actions are none, logoff, reboot or shutdown.

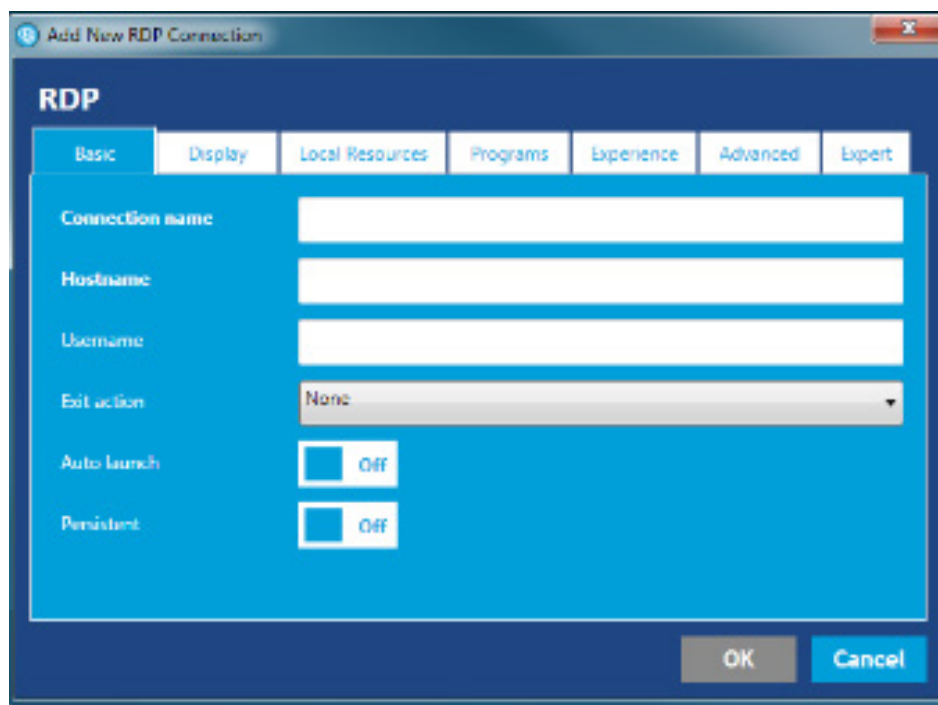
**Figure 5.** HP Easy Shell – Administrator Settings; Applications



## Connections

HP Easy Shell provides a number of VDI connections, including RDP, Citrix® and VMware.

**Figure 6.** HP Easy Shell – Administrator Settings; Connections



Each connection type has different options and properties that can be specified as provided by the connection provider. The VDI session can be launched by the user, or can be configured to automatically launch and login when the user logs into the thin client.

## Websites

HP Easy Shell provides a secure browser-based user experience, or specific website links can be added to HP Easy Shell. The administrator can configure HP Easy Shell to launch the website inside its embedded browser, or it can launch the full version of Internet Explorer in a separate window or full screen kiosk.


## Deployment

When using HP Easy Shell, deployment of a customized user experience is easy. Once the administrator has completed the configuration, the user can 'export' the user settings into a file and deploy that file using HP Device Manager or Microsoft SCCM.

**For more information, please visit**  
[hp.com/go/easyshell](http://hp.com/go/easyshell)

**Sign up for updates**  
[hp.com/go/getupdated](http://hp.com/go/getupdated)

     
Share with colleagues

  
Rate this document

© Copyright 2015 Hewlett-Packard Development Company, L.P. The information contained herein is subject to change without notice. The only warranties for HP products and services are set forth in the express warranty statements accompanying such products and services. Nothing herein should be construed as constituting an additional warranty. HP shall not be liable for technical or editorial errors or omissions contained herein.

Microsoft and Windows are U.S. registered trademarks of the Microsoft group of companies. Citrix is a registered trademark of Citrix Systems, Inc. and/or one more of its subsidiaries, and may be registered in the United States Patent and Trademark Office and in other countries.

